



iWA

LIVE, GATHER & PLAY

Dear Homeowner,

Hello from SRIAS Life Spaces! We're excited to bring you the latest updates from iWA at Puppalaguda. Here are some fresh site snapshots, taken on April 7th, 2025.

We're on track to deliver your new home on time and can't wait for you to experience it!



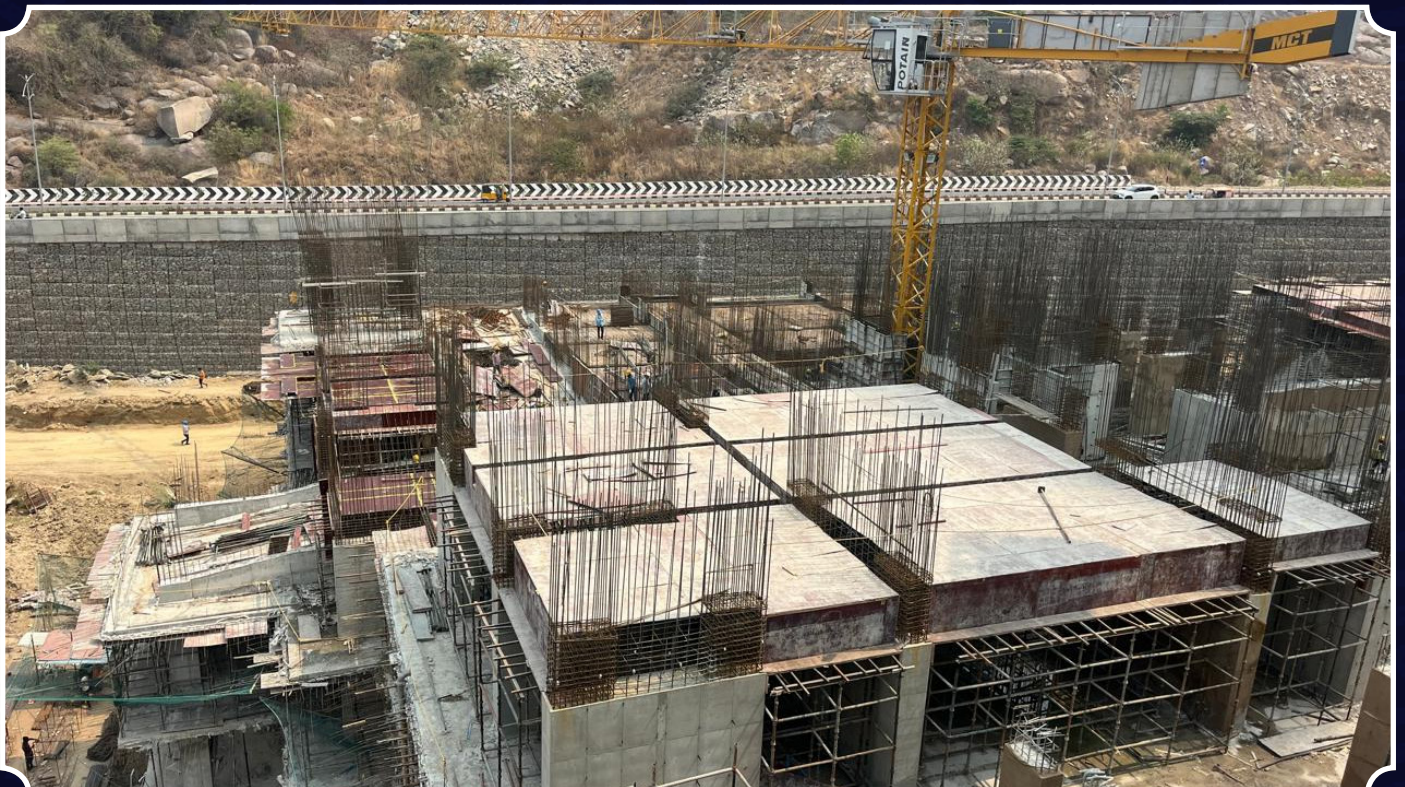
TOWER – 2

(P1 & P2 T Slab Wall reinforcement WIP)



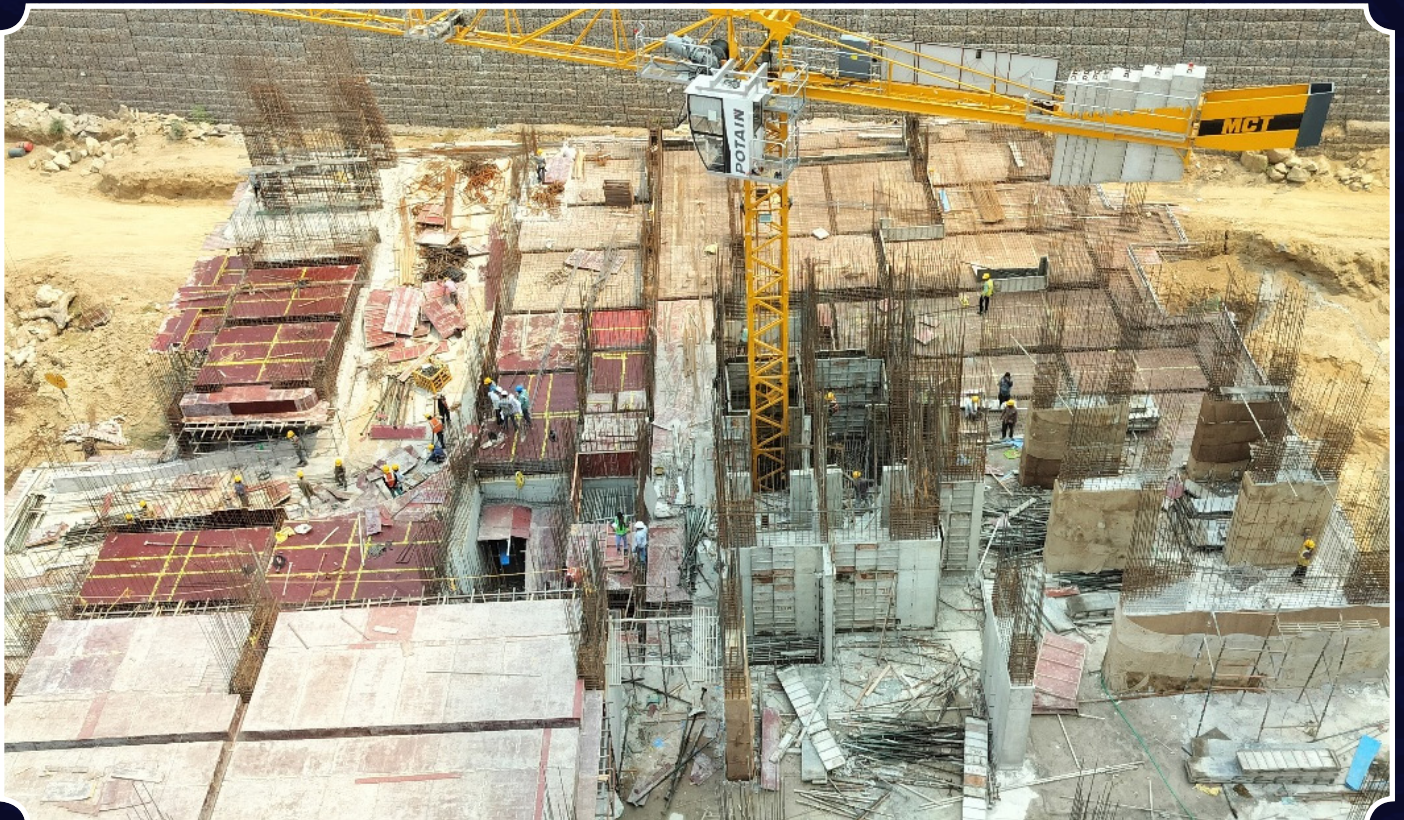
TOWER – 3

(P2 T Slab reinforcement WIP, P1 first to second floor wall reinforcement WIP)



TOWER – 5

(P1 – Slab Shuttering WIP, P2-B1 level
slab shuttering WIP)



TOWER – 6

(P3 – Beam side board shuttering WIP, P2 – Wall reinforcement WIP, P1 – DB boards fixing WIP)







RERA No. P02400007210

9000-2424-35

www.sriaslivespaces.com